



KS Wild 11th Annual Dinner
FOOD • COMMUNITY • MERRIMENT

www.kswild.org

www.rogueriverkeeper.org

PRINTED ON SAKURA 100% RECYCLED, 50% POST CONSUMER WASTE, CHLORINE-FREE PAPER

Cover photo: Wild and Scenic Illinois River Canyon just above Horsesign Creek. Nate Wilson.

NONPROFIT ORG
US POSTAGE
PAID
MEDFORD, OR
PERMIT NO 113



KS WILD NEWS

The Journal of the Klamath-Siskiyou Wildlands Center
Summer 2015



**THE RARE BEAUTY
OF THE KLAMATH-SISKIYOU**

KS WILD STAFF

Regina Castellon
Illinois Valley Coordinator

Holly Christiansen
Membership Associate

Michael Dotson
Development Director

Morgan Lindsay
Outreach Director

Jeanine Moy
Conservation Associate

Rich Nawa
Staff Ecologist

Gary Powell
Canvass Director

George Sexton
Conservation Director

Joseph Vaile
Executive Director

Myra Vilella
Bookkeeper

ROGUE RIVERKEEPER

Forrest English
Program Director

Robyn Janssen
Clean Water
Campaigner

Sarah Westover
LNG Organizer

BOARD OF DIRECTORS

Shannon Clery
Shelley Elkovich
Joseph Flaherty
Tracy Harding
Bob Hunter
David Johns
Stuart O'Neill
Gene Rhough
Laurel Samson
Laurel Sutherland



UPCOMING HIKES

June 20: Bigelow Meadows and Old-Growth Cedars

Explore old-growth cedar trees near the Limestone Trail and Mt Elijah in the newly expanded Oregon Caves National Monument. Carpool leaves the Northwest Nature Shop in Ashland at 8:30am, Gooseberries in Grants Pass at 9:30am and Coffee Heaven in Cave Junction at 10:00am.

June 27: Mariposa Botanical Reserve

Hike the Mariposa Botanical Preserve with Oregon Native Plant Society Botanist Julie Spelletich and help pull non-native weed species with BLM Botanist Armand Rebeschke. Carpool leaves from Shop N'Kart in Ashland at 9:30am. You can also enjoy a free evening presentation before the hike on Friday, June 26 from 6-7pm.

July 16: McDonald Peak Wine & Cheese Hike

Join special guest Kristi Mergenthaler, Siskiyou Chapter of Oregon Native Plant Society President, for an evening walk on the Siskiyou Crest to view rare plants like the Monument Plant and Howell's tauschia. Bring wine or cheese to share. Carpool leaves the Northwest Nature Shop in Ashland at 4:30pm.

July 18: Mt Elijah Hike

Celebrate the newly expanded Oregon Caves National Monument by visiting Mt. Elijah. Experience serpentine wildflowers and lily pads in Bigelow Lake. We will follow the beautiful and steep Bigelow Lake-Mount Elijah loop trail. Carpool leaves from Coffee Heaven's parking lot in Cave Junction at 8:30am.

August 15: Mt Ashland Hike

Get up high and explore the meadows along the Pacific Crest Trail. We'll see some late season wildflowers. This will be a bilingual hike in English and Spanish. Carpool leaves the Ashland Northwest Nature Shop at 9am.

For all hikes: Bring plenty of water, sturdy shoes, warm layers, and a lunch. Call Morgan at (541) 488-5789 or visit www.kswild.org/hikes for more info, directions, and to RSVP.

NEWS AROUND THE KS

Covering nearly 11 million acres, the Klamath-Siskiyou region stretches from the Umpqua in the north to California's wine country in the south, from the Pacific Ocean to the mighty Cascades. The mountain ranges and river valleys that define this region harbor renowned biological diversity and are some of the most spectacular in America.

1) HELP SAY NO TO GAS EXPORT

Visit rogueriverkeeper.org to see the latest update and help prevent the construction of the Jordan Cove liquefied natural gas export terminal and pipeline.

2) KALMIOPSIS RIVERS AT RISK

Mining companies want to develop industrial nickel strip mines in the headwaters of the Smith and Illinois Rivers. See page 10.

3) VICTORY FOR OWLS AND SALMON!

KS Wild wins protections for endangered Coho salmon and spotted owls. See Page 5.

4) WESTSIDE SALVAGE LOGGING

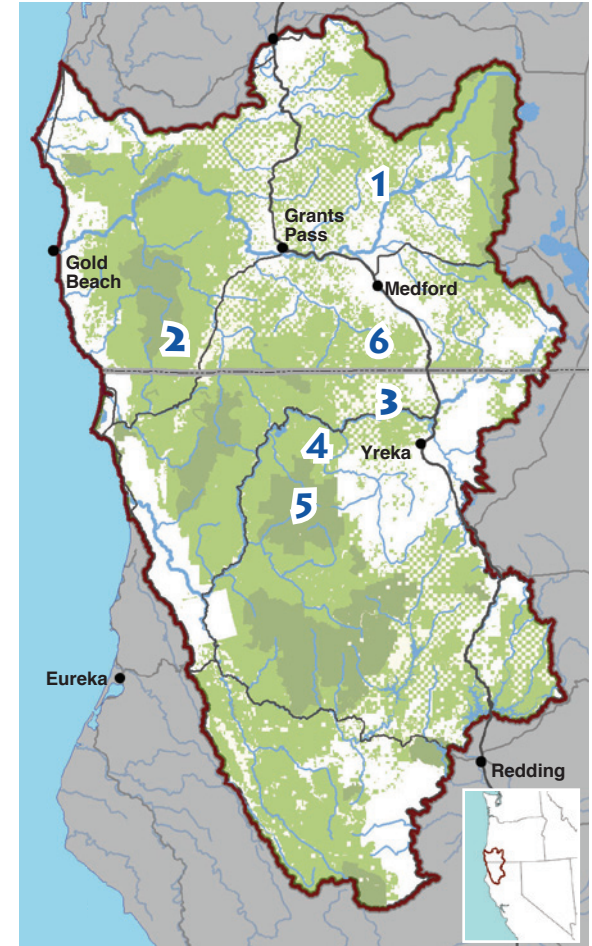
The Klamath National Forest is proposing to log over 30,000 acres of forest after fire. See page 9.

5) TYLER MEADOWS FEATURED HIKE

This magical spot in the Marble Mountains features views of the gorgeous Grider Creek watershed. See page 12.

6) APPLGATE VALLEY: NEDSBAR TIMBER SALE

Community members in the Applegate Valley have banded together to propose a positive alternative to a devastating major timber sale. Way to go Applegaters!



THE RARE BEAUTY OF THE KLAMATH-SISKIYOU

Musings from KS Wild's Executive Director, Joseph Vaile

Straddling the Oregon-California border, the Klamath-Siskiyou is a place of rare beauty – no matter where you look. Wild rivers flow through a backdrop of wilderness landscapes and ancient forests; majestic oaks hug the hillsides. When you look real close you see what makes this region stand out: trees, animals and plants that occur in this region and nowhere else in the world.



Darren Campbell

THE WILD KALMIOPSIS: Azaleas bloom on the banks of Rough and Ready Creek. KS Wild is working to protect this area from nickel strip mining.

This issue of the *KS Wild News* features rare beauty of the Klamath-Siskiyou and KS Wild's efforts to protect this natural heritage.

Right now, KS Wild is digging in and putting our place-based expertise to work analyzing new plans for public forests in western Oregon. These Resource Management Plans for Western Oregon will likely determine the fate of our **BLM Backyard Forests** – including nearly 1-million acres in southern Oregon. Special places like Grizzly Peak, the Wild Rogue River, and Rough and Ready Creek—an area with the largest concentration of rare plants in Oregon—are all at stake.

You can learn about the **Westside Timber Sale**, where the Klamath National Forest is about to move ahead with one of the largest timber sales in modern history. Much of the logging comes after the 2014 fire season around the Marble Mountain wildlands. Our approach to wildfire will continue to define national forest management in this region in the years to come.

Climate change is projected to bring more fire to our forests, and scientists are just now discovering how important it is to let natural processes take hold. In the past we have always logged forests after fire and replanted with dense tree farms, but naturally recovering post-fire forests are some of the rarest forest types in the West.

KS Wild's **Adopt-A-Botanical Area** program highlights our work to connect people to the rare beauty in the K-S. Over 100 specific areas have been designated on public lands because they are home to rare plant communities. Adopters head out and check in on these special places and make sure that there are no negative impacts to the rare beauty in designated Botanical Areas.

Two of the most iconic species in the Pacific Northwest, **northern spotted owl** and **Coho salmon** won a reprieve from a northern California court after an industrial timber company sought to get a free pass to log 150,000 acres of timberlands that were home to the rare species. The court found that the company was taking credit for habitat on public lands rather than actually protecting important habitat on their own industry land. This is a major victory and sets a strong precedent for protecting other plants and animals threatened by industrial logging.



Morgan Lindsay

ATOP GRIZZLY PEAK: Your public lands are waiting to be enjoyed, join a KS Wild hike this summer!

The Rogue River supports the largest fish runs in Oregon outside the Columbia River, and is an American treasure. Our **Rogue Riverkeeper Program** is focused entirely on keeping the Rogue's waters clean and the fish viable. The program is campaigning against a proposed LNG pipeline that would send fracked gas to foreign markets. This spring the campaign has blossomed with hundreds of people gathering in Medford and Salem to protest gas exports. Rogue Riverkeeper is also hard at work protecting the Rogue River from industrial pollution, unregulated mining, and wastewater discharge.

Along with the Wild Rogue, the region is home to one of the highest concentrations of wild rivers in the U.S. KS Wild is working to prevent nickel strip mines from harming the headwaters of the **Smith, Illinois and Pistol Rivers**.

The KS is a region of superlatives – a land with the rarest beauty, wildest rivers and the most outstanding natural amenities. Take a look inside the pages of the *KS Wild News* and learn more about how you can help protect the rare beauty of the Klamath-Siskiyou.

RAFT THE UPPER KLAMATH

2-DAY MULTI-SPORT WITH MOMENTUM RIVER EXPEDITIONS

July 18-19, 2015

\$550 per person, \$150 will be donated to KS Wild

Join Momentum River Expeditions and KS Wild on a trip combining big, long rapids, an ultra-comfortable backcountry camp (think glamping), and options for mountain biking, running, inflatable kayaking, and fly fishing. The Upper Klamath is one of the finest and most exciting class-IV+ rivers in the West. The trip will be hosted by KS Wild Executive Director Joseph Vaile and Momentum will donate \$150 per participant to KS Wild.

BIG WIN FOR SALMON AND OWLS

KS WILD BRINGS DOWN ILLEGAL CLEARCUTTING PLAN

If you have ever driven south on I-5 over the Siskiyou Crest then you've had the pleasure of being greeted to California by a patchwork quilt of clearcuts marring the mountains surrounding the little town of Hilt. Similar clearcuts fragment habitat, increase fire hazard and harm watersheds around Beaver Creek, an important cold-water tributary to the Klamath River. The primary culprit in both cases is the same, namely the Fruit Growers Supply (FGS) timber company.



A TIMBER GIANT OUT OF STEP WITH THE TIMES

Many communities and stakeholders in the Klamath Siskiyou have come together to try to find some common ground. Throughout the region people are pulling together to aid watersheds that have been hammered by logging and reckless road construction. Restoration forestry has become a household word and there is a growing awareness that clearcutting harms both wildlife and surrounding communities.

The FGS timber company is a relic of a bygone era of “anything goes” logging in which watersheds, wildlife, sustainability and fire hazard take a back seat to turning a quick buck. As years of overcutting and road building started to catch-up with the lumber company, their eyes turned towards the some of the last intact forests in the area, namely older forests in which at-risk spotted owls were nesting and streamside forests important to salmon watersheds.

SEEKING A LICENSE TO KILL

In a bold gambit to wipe out otherwise protected forests and watersheds the FGS timber company drafted a so-called “Habitat Conservation Plan” (HCP) that would allow it to circumvent the Endangered Species Act. In particular they hoped to obtain “take” permits for the majority of the spotted owls remaining in this critical portion of the Siskiyou Crest mountain range. Under the timber company plan, up to 83 spotted owls would have been written off in favor of expedited logging. In other words, the majority of the owls in the area would no longer have the habitat necessary to survive into the future.

FGS didn't attempt to estimate the number of threatened Coho salmon that would be harmed by their accelerated logging scheme. Instead, the timber company offered

vague assurances of habitat improvement down the road if they were allowed to ignore immediate and short-term impacts to salmon and watersheds from their industrial logging activities. Promises to improve practices decades into the future don't amount to much if the very fish and wildlife species that most need our help are targeted for additional harm today.



TO THE RESCUE!

Kill endangered species? Trash at-risk watersheds? Violate laws that apply to all of us in order to increase unsustainable logging practices? Not on our watch. KS

Wild's conservation director attended hearings, scoured through documents, developed technical comments and put together a team to challenge the illegal logging. Our friends at Klamath Forest Alliance, the Center for Biological Diversity, the Western Environmental Law Center and the Washington Forest Law Center answered the call and in August of 2013 we filed a legal complaint challenging the decision of the US Fish and Wildlife Service and the National Marine Fisheries Service to authorize the timber company's wildlife killing plans.

With a shoestring budget and a tiny staff it is not easy to take on two federal agencies and an industrial timber company and prevail. The odds are daunting and the hours are long. While Fruit Growers Supply timber company and the federal government can outspend us, they can't outwork us. We put our best foot forward and made the strong legal arguments that our nation's conservation laws apply to everyone, including well-heeled timber companies who would prefer not to play by the rules.

A RESOUNDING VICTORY

In early April of 2015 our efforts paid off. The U.S. District Court of Northern California issued a ruling that the logging plan violated a slew of laws and regulations. The court held that the logging company could not legally eliminate the vast majority of threatened owls in the area and that the plan did not ensure that negative impacts to at-risk Coho salmon were mitigated and minimized. The incidental take permits (license to kill) owls and Coho were invalid and void.

Next up is another hearing concerning the eventual remedy and resolution of our challenge. After that, the timber company or the government could appeal the victory. We are confident that our efforts to protect the forests, wildlife and watersheds of the Siskiyou Mountains will prevail and we promise to never stop advocating for them.

FLOAT & LEARN WITH US

New this summer, Rogue Riverkeeper is offering float trips every second Sunday of the month. We will focus on a different section of river each month to learn about our work in the watershed.

Our Clean Water Campaigner and veteran guide, Robyn Janssen will lead each trip. Boats, paddles and life jackets are included. Space is limited to 12 people, or you can bring your own boat and float along with us. Bring snacks, water, sunscreen and clothing that can get wet, but no alcohol please. Suggested donation for each float trip is \$35 for a membership and \$10 for members. RSVP required to reserve your spot on these trips! Call Robyn at 541-488-9831.



JUNE 14, 12PM: DAM REMOVAL WITH BOB HUNTER

Meet at Fisher's Ferry boat ramp on Gold Ray Rd between Central Point and Gold Hill

JULY 12, 12PM: PROPOSED GAS EXPORT PIPELINE CROSSING

Meet at Upper Rogue Regional County Park in Shady Cove

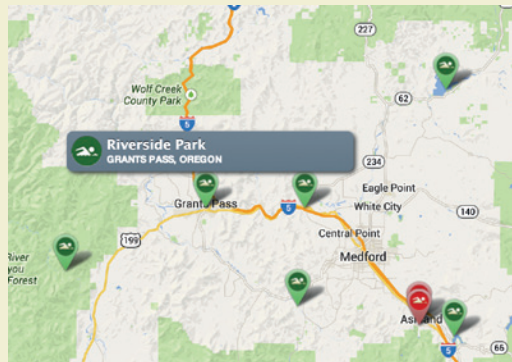
AUGUST 9, 12PM: RESTORING WATER QUALITY

Meet at TouVelle State Park boat ramp on Table Rock Road outside Central Point

FIND CLEAN WATER WITH SWIM GUIDE

This summer Rogue Riverkeeper is again getting you current information on water quality at swimming holes and recreational areas throughout the watershed using the Waterkeeper Swim Guide.

From late May through October we will be analyzing water samples for bacteria and other water quality parameters from the Rogue, Applegate and Illinois Rivers, local reservoirs including Lost Creek and Emigrant, and other points in between. >>> Visit ROGUERIVERKEEPER.ORG to see current water conditions or to get the Swim Guide app for your smartphone!



RAFT THE WILD ROGUE AND SUPPORT ROGUE RIVERKEEPER

ROW Adventures and Rogue Riverkeeper are partnering up to take ten lucky folks on a 4-day, 3 night rafting and camping trip to benefit Rogue Riverkeeper!

The Wild & Scenic Rogue is one of the original eight designated Wild & Scenic Rivers and offers something for everyone from whitewater thrills to historical side hikes, amazing wildlife to relaxing by the river's edge. The trip includes amazing river guides, river gear, camping gear, delicious meals and more. All you have to bring are your clothes, a toothbrush and your sense of adventure! Joining your trip will be river guide and Rogue Riverkeeper staff member, Robyn Janssen.

The trip is September 7th through the 10th and is \$695 per person (a \$200 discount off the regular price!) For every guest who joins us, ROW Adventures will donate \$150 to Rogue Riverkeeper. Space is limited, call us today for more information: 541-488-9831.



MAKING PROGRESS ON SUCTION DREDGE MINING

The Oregon Department of Environmental Quality (DEQ) issued a new permit this spring for suction dredge gold mining that makes several key changes that conservationists, fishermen, boaters and riverside landowners have been seeking for years. The new permit prohibits suction dredging in streams and rivers already suffering from pollution, requires miners clearly display permit numbers, and requires annual records be submitted to DEQ. These changes will allow the public and DEQ to hold miners accountable, and will reduce water quality impacts in streams that are already damaged.

These changes are a good step in the right direction, but do not yet provide a lasting solution to protect fish habitat, particularly for salmon and lamprey. We are hard at work this legislative session supporting protective and workable solutions to address impacts from both suction dredging and mining in riparian areas.

Please contact forrest@rogueriverkeeper.org if you would like a reference card on suction dredging rules and how to report violations, or if you would like to help support more long-term solutions.



12,000 STRONG OPPOSE WESTSIDE "SALVAGE" LOGGING

MARBLE MOUNTAINS: WILDLANDS OR CLEARCUTS?

The groundswell of concern over Forest Service plans to clearcut up to 30,000 acres of forests impacted by the 2014 wildfires is becoming a tidal wave. The more that people learn about the Westside timber sale the less they like it.

The Klamath National Forest is proposing to punch roads and logging units into some of the wildest and most important watersheds in the region. In particular, they hope to clearcut protected "late-successional" old-growth reserves in the headwaters of Grider Creek (see featured hike page 12). In addition to serving as a regionally important wildlife corridor, Grider Creek was one of a handful of watershed designated as "key" to restoring at-risk Klamath salmon populations. Clearcutting this watershed is simply the wrong thing to do.



CAN YOU HEAR US NOW? 12,000 conservation comments were submitted to the Klamath National Forest.

The Forest Service is attempting to throw out the rulebook and turn back the clock. In 2015 there is widespread consensus that post-fire clearcutting inhibits forest recovery, harms watersheds, wildlife and soils, and increases fire hazard. Fishermen, scientists, hikers, botanists, birders, river guides, the Karuk tribe, watershed councils and fire ecologists have all joined to support natural recovery and oppose clearcutting in the post-fire Westside forests. These voices were recently joined by Dr. Jerry Franklin, author of the Northwest Forest Plan, who wrote to the Forest Service that the old-growth reserves should be protected rather than logged.

In an attempt to get away with trashing protected forests and watersheds, the Klamath National Forest is seeking to reduce opportunities for public involvement and eliminate the appeal period for the timber sale. Rarely have federal land managers shown such disdain for all of the non-timber values that most Americans hold dear in their public lands.

By the time this issue of KS Wild News goes to press the Forest Service may have fast-tracked a decision to allow thousands of acres of clearcutting this summer. 12,000 people have already spoken against this heedless rush to log. Join the groundswell!

KALMIOPSIS WILD RIVERS: WORTH MORE THAN A NICKEL MINE!

Amidst a rapidly changing global climate and extreme droughts throughout the American west, many people now realize our most precious resource is water. Our Klamath-Siskiyou home boasts the densest concentration of wild rivers in the lower 48 states, with some of the cleanest water in the world.

THE ISSUE: Unique soils of the Kalmiopsis region promote conditions for rare plants, yet also attract mining firms looking to exploit mineral deposits. Threats of nickel strip mining are not new to communities here, and now it is currently proposed in headwaters of the Illinois (a key tributary to the Rogue River), Smith and Pistol Rivers.

WHERE ARE WE NOW? Last fall, both Curry and Del Norte Counties wrote to the U.S. Forest Service to say they oppose the mine because of impacts to human health and the recreation industry. Currently, the Red Flat Nickel Corporation needs to submit an amendment to show how they're going to get water for the drilling.

The ongoing threats have prompted KS Wild and a coalition of conservation groups to push for protection of these watersheds. In April, we proposed to designate the North Fork Smith River as an Outstanding Resource Water to the Oregon Environmental Commission.

THANKS TO YOUR SIGNATURES, and coalition efforts, Senators Wyden and Merkley, and Representatives DeFazio and Huffman have called on the Administration to place a temporary withdrawal on mining. We are currently working on a long-standing request to have the area withdrawn from the 1872 mining act.

WE HAVE NO CHOICE: We must protect our water sources, not turn them into a health and environmental hazard. For us to continue living and flourish in this region we need to build a robust economy around a healthy, natural ecosystem.

To help protect the Kalmiopsis from nickel mining, sign the petition at:

WWW.KALMIOPSISWILDRIVERS.ORG



NORTH FORK SMITH RIVER: The river is so clean that underlying geology gives it an extraordinary emerald appearance.

ADOPT-A-BOTANICAL AREA INCREASING VOLUNTEER LEARNING AND STEWARDSHIP OPPORTUNITIES



On March 14, the Adopt-a-Botanical Area Program kicked off the spring 2015 season with a training event with 22 adopters, and presentations by Kristi Mergenthaler (Siskiyou Chapter of the Oregon Native Plant Society) and Marla Knight (Klamath National Forest) and little game of Botany Bingo! Thanks to everyone that attended this fun learning event (above).

On April 18 and 19th we hosted a Training and Stewardship Retreat for 15 ABA volunteers based out of the Deer Creek Center in Selma. Volunteers enjoyed botany walks, informative presentations and demonstrated their stewardship skills.

JOIN US: MORE BOTANICAL EVENTS THIS SUMMER!



SATURDAY, JUNE 27:

**Botanical walk and weed pull
at the Mariposa Preserve**

Greene's Mariposa lily found at the Mariposa Preserve.



THURSDAY, JULY 16

**Wildflowers, Wine and Cheese
at McDonald Peak Botanical Area**

Howell's tauschia found at McDonald Peak.

See page 1 for more details

FEATURED HIKE: TYLER MEADOWS REMOTE MARBLE MOUNTAINS WILDERNESS TRAIL OFFERS CHALLENGES AND VIEWS

If you want to visit the Tyler Meadows trailhead in the Klamath National Forest you should probably go sooner rather than later. This remote and spectacular trail on the north end of the Marble Mountain Wilderness is scheduled for salvage logging that would clearcut thousands of acres right up to the boundary of the wilderness area. See page 9.



OLD GEOLOGY: The rugged, gnarled spine of Big Ridge on the trail from Tyler Meadows into the Marble Mountains.

Currently the Tyler trail up Big Ridge is a remote and spectacular way to access the Marble Mountain high country while enjoying views of wild forests naturally recovering from wildfire. Both the drive in and the hike offer grand views of the Grider Creek Watershed. Grider Creek is somewhat famous both as a regionally important wildlife habitat corridor and as a sizable old-growth valley through which the Pacific Crest Trail drops down to the Klamath River. If the Forest Service has its way, soon logging roads and clearcuts will dominate the view downstream from the Tyler trailhead.

The trail enters the Marble Mountain Wilderness almost immediately and quickly drops to a small saddle before steadily gaining elevation up the ridgeline and eventually up to an un-named 6,900-foot peak offering views of the Grider Valley Meadows, Red Rock Valley and the Marble Mountain high country.

It's a five-mile hike along Big Ridge up to the Pacific Crest Trail and the mountain peaks. Or one can leave the trail at the four-mile mark and drop down to either Packers Valley and Turk Lake to the south or the Grider Meadows to the north. Wild forests, mountain meadows and impressive peaks offer endless opportunities for exploration and adventure.

The Tyler trailhead is a long way from anywhere and involves a lot of driving on remote forest roads. Several miles before the trailhead Faulkstein Springs makes for a convenient car camping spot. Be sure to be well prepared with a good map and a full tank of gas before undertaking this adventure.

FOCUS ON OUR KS WILD FAMILY

YREKA PHLOX (*PHLOX HIRSUTA*)

The Klamath-Siskiyou region is home to an astounding diversity of plants, including over 280 endemic plants found only in southern Oregon and northern California. One of the most rare endemic plants in the region is the Yreka phlox, a small pink flowering sub-shrub in the Polemoniaceae family native to Siskiyou County, California.

Yreka phlox grows 2-6 inches high from a stout, hairy woody base on mineral-rich serpentine soils. Stiff hairs cover the plant, giving it the name *hirsuta*. Pink to purple flowers bloom during April through June and the leaves have no stalk, attaching directly to the stem.



U.S. Fish and Wildlife

Thanks to KS Wild and the Native Plant Society of Oregon, the Yreka phlox has been protected under the federal Endangered Species Act since 2000. Found only in the hills surrounding Yreka, California, this extremely rare flower still faces threats from irresponsible off-road vehicle use. We are hopeful that the Yreka phlox will continue to bloom for many years into the future.

WELCOME SUMMER LAW CLERK BRODIA MINTER

We are happy to welcome Brodia Minter as KS Wild's summer law clerk. For the next few months, Brodia will support KS Wild's public lands conservation program and work on issues including researching clean water protection, timber sales, grazing plans, and protecting endangered species.



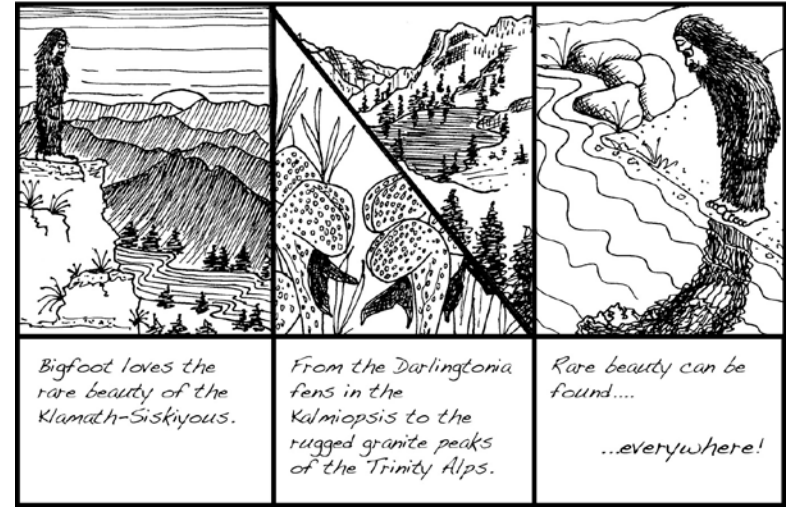
Brodia Minter

A Connecticut native and graduate of the University of New Haven, Brodia moved to Oregon in 2013 to pursue an environmental law degree from Willamette College of Law in Salem. An outdoor enthusiast, Brodia cites an early exposure to nature and the outdoors as fueling her passion for protecting the environment. She looks forward to exploring all the Klamath-Siskiyou has to offer this summer.

The Adventures of Bigfoot!
Robyn Janssen



Episode 7



SUPPORT BUSINESSES WHO SUPPORT US!

Affordable Locksmiths, American River Touring Association, Ashland Alternative Health, Ashland Center For Women's Health, Aquatic Ecosystem Sciences, Berryvale Grocery, Big Tree Farms, Carlos Delgado Architect LLC, Cecelia Howard Psychiatric Nurse Practitioner, Computer Doctor of Ashland, Dan the Backhoe Man, Deluxe Awning Company, Full Circle Real Estate, Gallerie Karon, Gift Community, Grateful Meds Oregon, Herb Pharm, Inner Synergy, Jahfirm Productions, Jani Rollins MD, Jefferson State Financial Group: Insurance, Jive Mountain, Kathy A. Sprick D.D.S, Kentro Body Balance, Kindler Stout Piano Service, Kleiman & Stamper Physical Therapy, KSKQ, Mark Machala Chiropractic Physician, Master Craft Wood Floors Inc, Momentum River Expeditions, Must Have Menus, One Voice Associates LLC, Patagonia, Plant Oregon, Richard Billin Attorney at Law, Rogue Basin Coordinating Council, Rogue Valley Runners, ROW Adventures, ScienceWorks Museum, Southern Oregon Mediation Center, Standing Stone Brewing Co, The Downey Company Home Builders, True South Solar, Upper Limb-It Tree Service, Valley Rain Harvesting, Wessler Design Associates Inc, Wild Rose Herbs.

KS WILD'S MISSION

The Klamath-Siskiyou Wildlands Center is an advocate for the forests, wildlife and waters of the Klamath and Rogue River Basins of southwest Oregon and northwest California. We use environmental law, science, collaboration, education and grassroots organizing to defend healthy ecosystems and help build sustainable communities.

KSWILD.ORG

P.O. Box 102
Ashland, OR 97520

(541) 488-5789
info@kswild.org